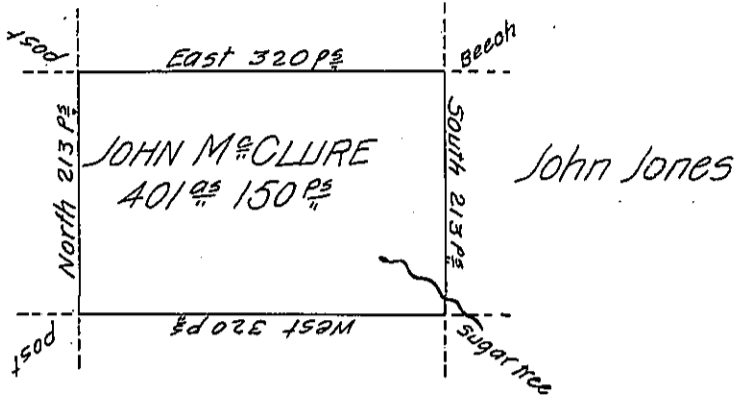


David Hoge

Deny McClure



William Graham

Situate on the West Side of French Creek in Allegheny County Containing 401 ac 150 ac
 and allowance of Six per cent for roads &c. Surveyed 1st March 1800 in pursuance of a
 Warrant of 400 ac Granted to John McClure bearing date the 4th day of January 1794.
 Having examined the above Survey as entered in Survey book page 111 in my Office I find
 the Same correct. Certified July 6th AD 1820.

To Jacob Spangle, ^(W) Esq. }
 Sur. Gen. }

James H. (ob) lington D.S.

Situate now in Cassawago tow. P. Crawford county.

IN TESTIMONY that the above is a copy of the original remaining on file in
 the Department of Internal Affairs of Pennsylvania, made
 conformably to an Act of Assembly approved the 16th day of
 February, 1833, I have hereunto set my Hand and caused
 the Seal of said Department to be affixed at Harrisburg,
 this second day of January 1906

Isaac R. Brown
 Secretary of Internal Affairs.